

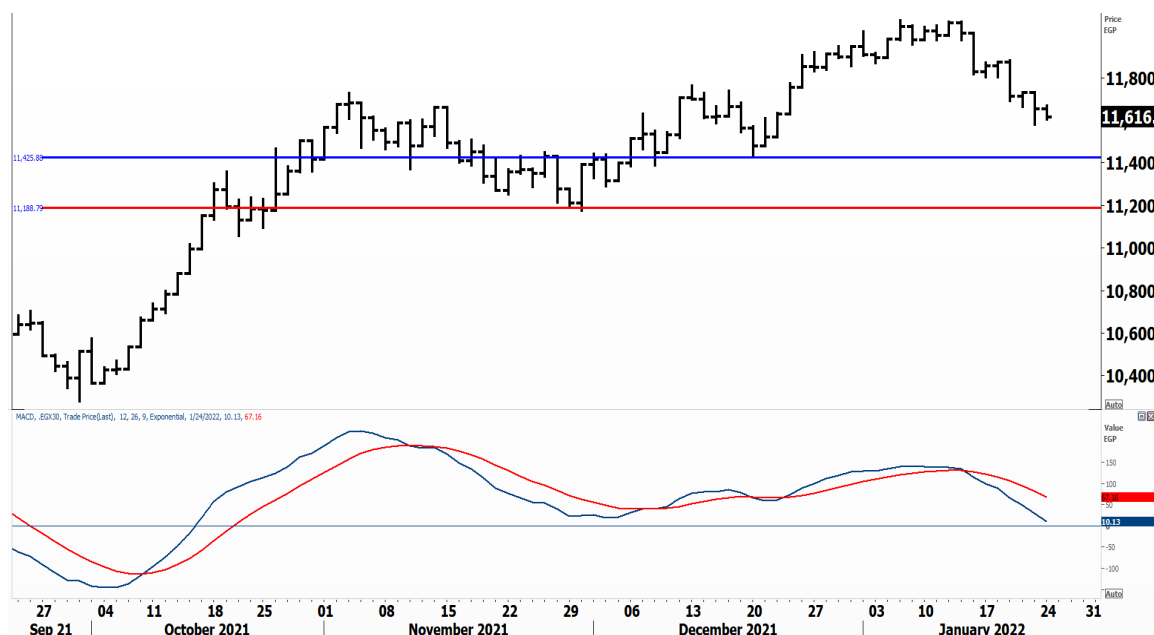


PIONEERSECURITIES

# TECH TO THE POINT

25-Jan- 2022

This report must be read with the disclaimer  
on the last page



## Analysis

The two levels to watch are 11,400 and 11,200. As we mentioned before, a break below either of these two levels will not be a positive signal. If, however, the 11,200 is violated, this will have a bearish effect for a relatively long period of time.

Until now, we expect a rebound to take place from the 11,400 area, which should lead to a renewed significant rise. A break below 11,400, if it takes place, we will be a signal to sell partially as selling pressure will increase.

We were expecting a stronger January, but buyers are still wary of the Egyptian market and they do not have enough trust to enter the stock market aggressively.

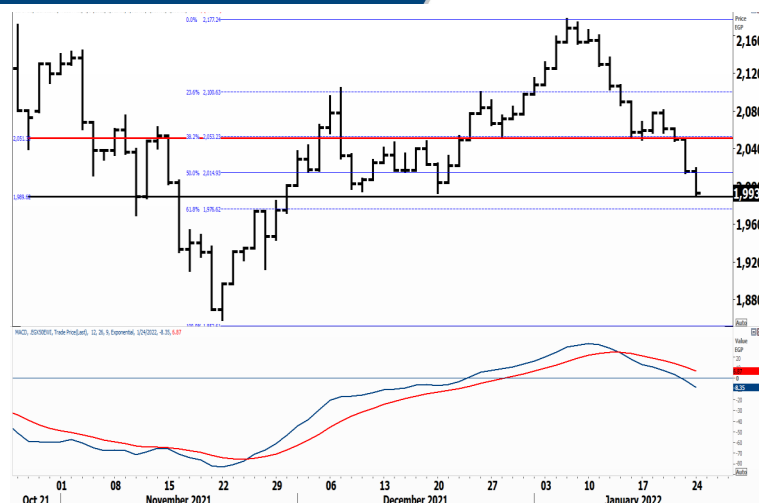
## Egyptian Equal Weights Index .EGX 50

### Analysis

The EGX 50 index continued its panic, closing exactly at its important support. In other words, if we fall today, the market will be in real jeopardy, which will open the chances for the EGX 30 to break 11,400 easily which will threaten the 11,200 level too.

Thus, if the EGX 50 breaks below the 1,990 the stop will be triggered, and it will not be wise to enter even if we test the next support.

We do not recommend buying unless a clear entry signal is triggered.



### Resistance

No stocks broke their resistance yesterday.

### Support

No stocks broke their support yesterday.

## Testing

### Support

- HELI**  The 6.05 is still serving as support. We do not recommend buying, however, until a breakout above the minor peak that lies at 6.6 takes place.
- SWDY**  Support lies at 9. A rebound can take place from this level; such a rebound can lead the stock near 9.3-9.35 were selling will be recommended until we see how the stock will perform.
- SKPC**  If the stock rebounds from here it will find significant selling pressure at the 7.5-7.6 area. We do not recommend buying or repurchasing until a confirmed breakout above 8 takes place.
- ESRS**  Despite that ESRS hit a support, its rise will probably not be strong given the current market circumstances. If it approaches 14 selling pressure will intensify significantly, this is why we recommend selling the rise.

### Resistance

Symbol	S. Description	Last	Buying Area 1	Buying Area 2	Selling Area 1	Selling Area 2	Selling Area 3	Stop Loss
SWDY.CA	ELSWEDY ELECTRIC	9.10	8.95	9.16 ↑	9.35	9.5	9.85	8.6
HELI.CA	HELIOPOLIS	6.15	6.07	6.19 ↑	6.32	6.45	6.8	5.8
ESRS.CA	EZZ STEEL	13.42	13.1	13.45 ↑	13.72	13.95	14.4	12.5
HRHO.CA	EFG HERMES HOLD	14.7	14.4	14.80 ↑	15.1	15.45	16	13.7
DOMT.CA	ARABIAN FOOD IND	4.24	4.17	4.26 ↑	4.35	4.45	4.6	4.00
ABUK.CA	ABU QIR FRT&CHM	21.49	21.15	21.6 ↑	22.05	22.8	23	20.35
ORWE.CA	ORIENTAL WEAVERS	8.5	8.4	8.57 ↑	8.75	8.85	9.2	8.07

*N.B. please note that the levels are too close as these trading opportunities only suit T+0 speculators*

*The prices that are accompanied by a green arrow in the above table show resistance levels. Thus, a break above these levels will pave the way to achieve one (or all) of the targets.*

*The area between buying area 1 and buying area 2 is a trading area.*

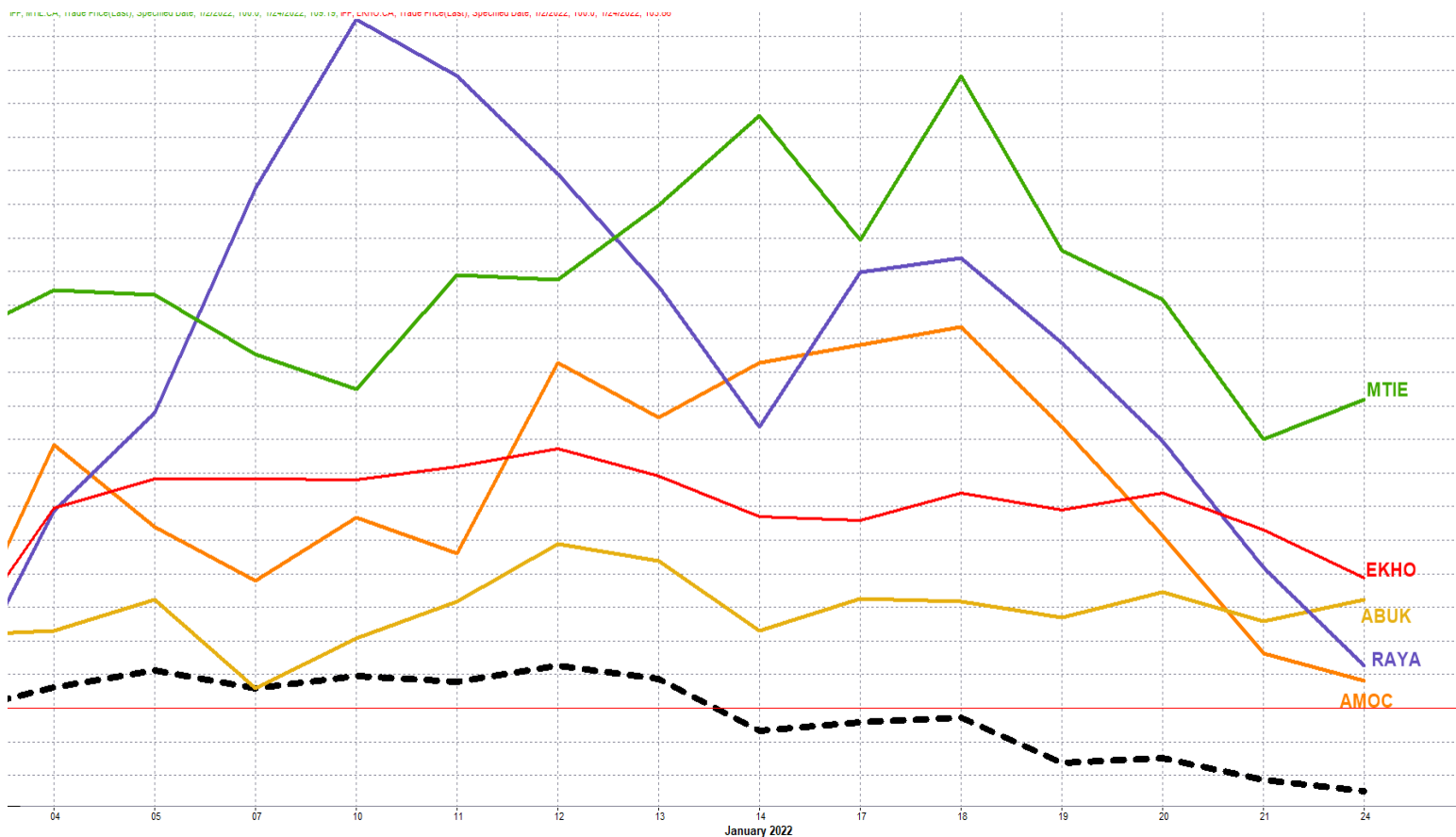
#### Yesterday's T+0/T+1 Trades



Symbol	Hit first Target	Hit Second Target	Hit Third Target	Hit Stop Loss	Triggered Buy	No Action

#### Top 5 Performers

#### EGX 30 Stocks; Past 2 Weeks



Symbol	S. Description	Last	Support 1	Support 2	Resistance 1	Resistance 2	Trend	Recommendation	Stop Loss Re-Entry
COMI.CA	COM INTL BK/d	52.7	51.5	50.2	54.2	56.5	↔	Hold	50.2
FWRY.CA	FAWRY FOR BANKING TECHNOLOGY /d	10.86	10.8	10.15	12.5	13.24	↔	Hold	10.15
EAST.CA	EASTERN CO/d	10.7	10.55	10.35	11	11.5	↔	Hold	10.35
EKHO.CA	EGYPT KUWAIT H/d	1.38	\$1.38*	\$1.35	\$1.42	\$1.49	↔	Hold	\$1.30
TMGH.CA	TALAT MOSTAFA/d	8.85	8.8	8.5	9.5	10.1	↔	Hold	8.5
ABUK.CA	ABU QIR FERTILIZERS /d	21.49	20.5	19.5	22.11	23	↔	Hold	19.5
HRHO.CA	EFG HERMES HOL/d	14.70	14.3	14	15.3	15.75	↔	Hold	14.3
SWDY.CA	ELSWEDY ELECTR/d	9.10	9	8.8	9.6	10	↔	Hold	9
ETEL.CA	TELECOM EGYPT/d	16.5	16	15.8	17.1	17.55	↔	Hold	16
CLHO.CA	CLEOPATRA HOSPITAL	4.8	4.85*	4.7	5.2	5.4	↔	Hold	4.7
MFPC.CA	MISR FERTILIZERS PRODUCTION CO	89.51	88	86	95	100	↔	Hold	95
CIRA.CA	CAIRO FOR INVESTMENT AND REAL ESTATE	13.15	13	12.6	14	14.85	↔	Hold	14
ISPH.CA	IBNSINA PHARMA/d	3.71	3.62	3.55	3.81	4.1	↔	Hold	3.55
MNHD.CA	NASR CITY HOUS/d	2.64	2.58	2.5	2.81	3.1	↔	Hold	2.81
SKPC.CA	SIDI KERIR PET/d	7.25	7.22	7	7.65	8.04	↑	Hold	7
CIEB.CA	CREDIT AGRICOL/d	8	7.92	7.75	8.47	8.65	↔	Hold	7.75
PHDC.CA	PALM HILL DEV /d	1.734	1.735*	1.65	1.88	1.93	↔	Hold	1.93
AMOC.CA	ALEXANDRIA MINERAL OILS CO/d	3.73	3.7	3.55	4.15	4.25	↔	Hold	3.7
ESRS.CA	EZZ STEEL/d	13.42	13.2	12.9	14.2	15.14	↔	Hold	14.2
ORWE.CA	ORIENTAL WEAVERS /d	8.5	8.42	8.15	8.75	9.4	↔	Hold	8.15
HELI.CA	HELIOPLIS/d	6.15	6	5.7	6.6	7	↔	Hold	6
MTIE.CA	MM GROUP FOR INDUSTRY /d	7.37	7.15	6.85	8.1	8.75	↑	Hold	7.15
AUTO.CA	AUTO GHABBOUR /d	4.67	4.6	4.38	4.85	5.17	↔	Hold	4.6
SPMD.CA	SPEED MEDICAL	1.070	1.05	0.96	1.18	1.24	↔	Hold	1.24
CCAP.CA	CITADEL CAPITA/d	1.179	1.17	1.13	1.225	1.268	↔	Hold	1.17
ORHD.CA	ORASCOM EGYPT/d	5.45	5.42	5.2	6.15	6.45	↔	Hold	5.2
RAYA.CA	RAYA HOLDING FOR FINANCIAL INVESTMENT	2.42	2.45*	2.3	2.8	2.93	↔	Hold	2.8
RMDA.CA	TENTH OF RAMADAN FOR PHARMACEUTICAL	2.270	2.3*	2.1	2.55	2.7	↔	Hold	2.3
EGTS.CA	EGYPTIAN RESORTS CO	1.367	1.36	1.32	1.47	1.6	↔	Hold	1.36

### Guidelines



**Bullish**



**Bearish**



**Neutral**

Trend: (Upgrade, Downgrade): Change in trend color refers to upgrade or downgrade in the trend relative to the previous trend direction. E.g. change from "↓ Down" to "↔ Flat" is considered an upgrade and vice versa.

Buy: Buy the full position.

P.Buy: Buy portion of a position

Hold: Don't Buy or sell.

P.SELL: Sell portion of a position.

Sell: Sell the full position.

Stop Loss: Completely exit the position (or) Re-entry in cases of Selling.

## Disclaimer

This report has been prepared according to the general data available for public, in accordance with the professional standards applied in that career to the best knowledge of the reporter. The recommendations mentioned are a guiding tool representing a professional opinion, and not granting any profits, consequently it is not obligatory for our valued customers and investors. Pioneers Securities©, Egypt shall not be liable for any direct, indirect, incidental, or consequential damages, including limitation losses, lost revenues, or lost profits that may result from these materials. Republishing this report or any of its contents is subject to prior approval; referring to the source is a must. Opinions expressed are subject to change without notice and may differ or be contrary to the opinions or recommendations of Pioneers Securities©, Egypt Research or the opinions expressed by other business areas or groups of Pioneers Securities©, Egypt as a result of depending solely on the historical technical behavior (price and volume).

## Technical Analysis Department

### **Saleh Nasser**

Chief Technical Strategist

### **Ahmed Hassan**

Senior Technical Analyst

### **Dina Fahmy**

Senior Technical Analyst

### **Tips on reading the report**

The first page includes an analysis of two major indices in the Egyptian Stock Market; the norm is that we will analyze both the EGX 30 and 70, but sometimes we will compare the EGX 30 to its 50 counterpart if there is important information in this comparison. We also use the Hermes Last Index interchangeably with the EGX 30. The .HRMSL index has an important edge; it uses last prices instead of VWAP. First thing our clients should do is to read the indices analysis carefully to have a clear understanding on our overall view.

The second page includes stocks that broke out beyond their resistance levels, and those that violated their support levels. It also includes stocks that are testing their support levels and those that are testing their resistance. This analysis is important and it is the core of our recommendations. It is important to note though that not all stocks that are testing their support levels are bullish, and not all that are testing their resistance levels are bearish. To make it easier for our clients, we have placed a bull face 🐂 if we consider the stock under study bullish, and a bear face 🐻 if we consider it bearish. We also added a big bullet 📌 if we are neutral.

It is important to note that you might find a stock that we consider bullish in our analysis (in the breakouts/testing section) but it remains as a hold or partial sell in the table. The conflict here is that the table is more conservative. This will not be an issue with our clients, because our analysis will explain why we are being bullish/bearish on the stock.